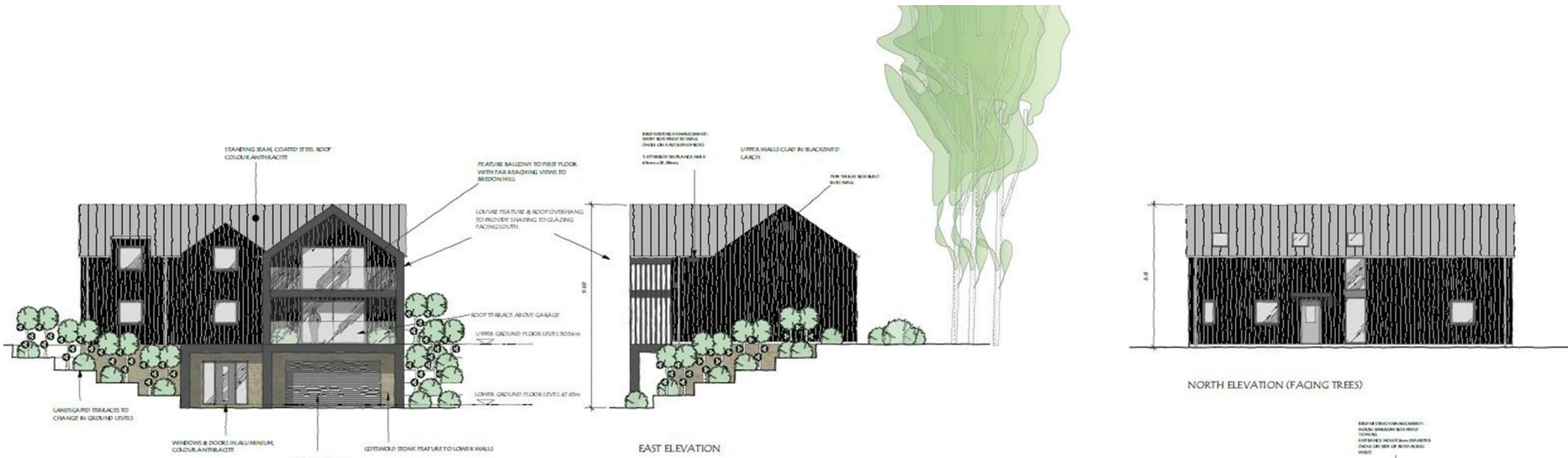




Land at (Os 9406 4634) Allesborough Hill, Pershore, WR10

Offers over £700,000

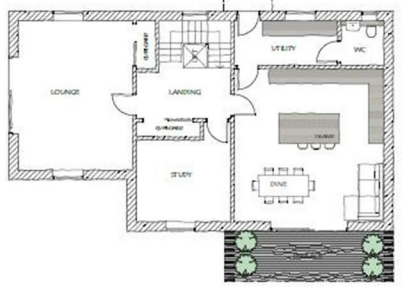




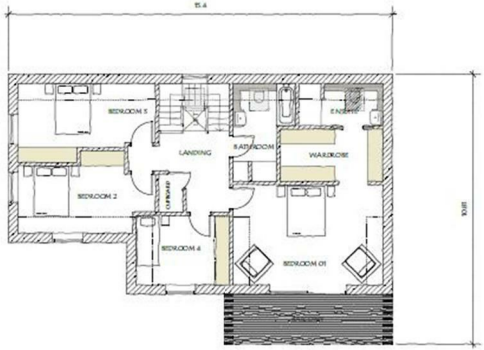
HOUSE 1



LOWER GROUND FLOOR PLAN
FLOOR AREA 74.72 sqm



UPPER GROUND FLOOR PLAN
FLOOR AREA 138.54 sqm



FIRST FLOOR PLAN
FLOOR AREA 138.54 sqm

INSIDEOUT
RESIDENTIAL + COMMERCIAL

Project: NEW DWELLINGS ALLERBOUGH HILL, IPSWICH

Architect: M&B SOLUTION

Drawing Title: HOUSE 1 PLANS AND ELEVATIONS

Date: 11/07/21 | Rev: 11/10/2021

Drawing No: 10022_02B_A06

Scale: 1:100

© All rights reserved. No part of this drawing may be reproduced, stored in a retrieval system, or transmitted in any form or by any means, electronic, mechanical, photocopying, recording, or by any information storage and retrieval system, without the prior written permission of the architect. This drawing is the property of the architect and is to be used only for the project and site for which it is prepared. It is not to be used for any other project or site without the prior written permission of the architect.

www.insideout-ai.com

Offers over £700,000

Land at (Os 9406 4634) Allesborough Hill

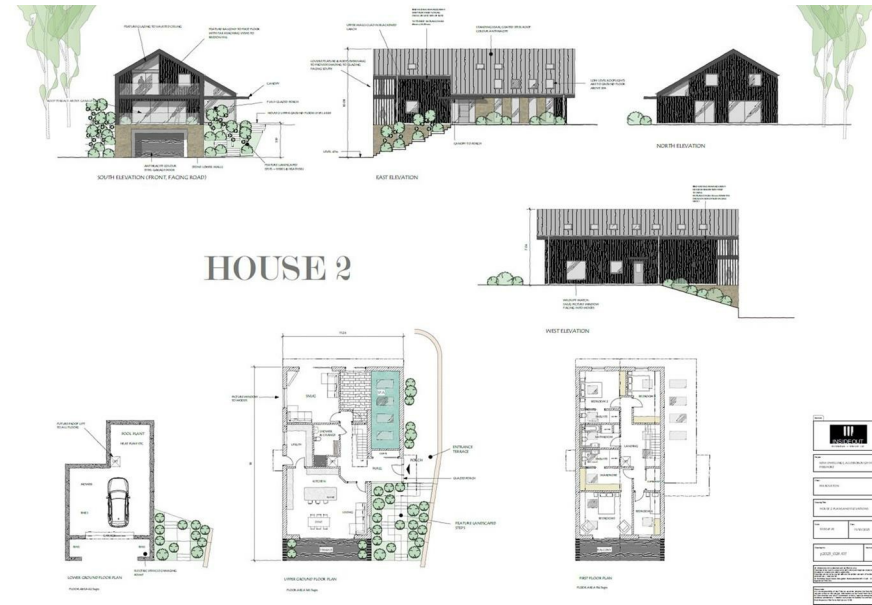
Pershore, WR10 2AB

- Calling all developers
- Three luxury homes
- A small, exclusive development
- It must be viewed to be appreciated

A UNIQUE AND SPECIAL DEVELOPMENT OPPORTUNITY IN AN ELEVATED POSITION WITH FAR REACHING VIEWS OF PERSHORE ABBEY BEYOND

A superb opportunity to purchase a small development site on the outskirts of Pershore, with far reaching views in a truly wonderful position backing out onto woodland. The site currently has planning approval (W/24/00151/FUL) for three luxury homes.

If you are in the market to create a special and individual development then this has to be a consideration.



Disclaimer

DISCLAIMER

Whilst we make enquiries with the Seller to ensure the information provided is accurate, Christian Lewis makes no representations or warranties of any kind with respect to the statements contained in the particulars which should not be relied upon as representations of fact. All representations contained in the particulars are based on details supplied by the Seller.

Your Conveyancer is legally responsible for ensuring any purchase agreement fully protects your position.

Please inform us if you become aware of any information being inaccurate.

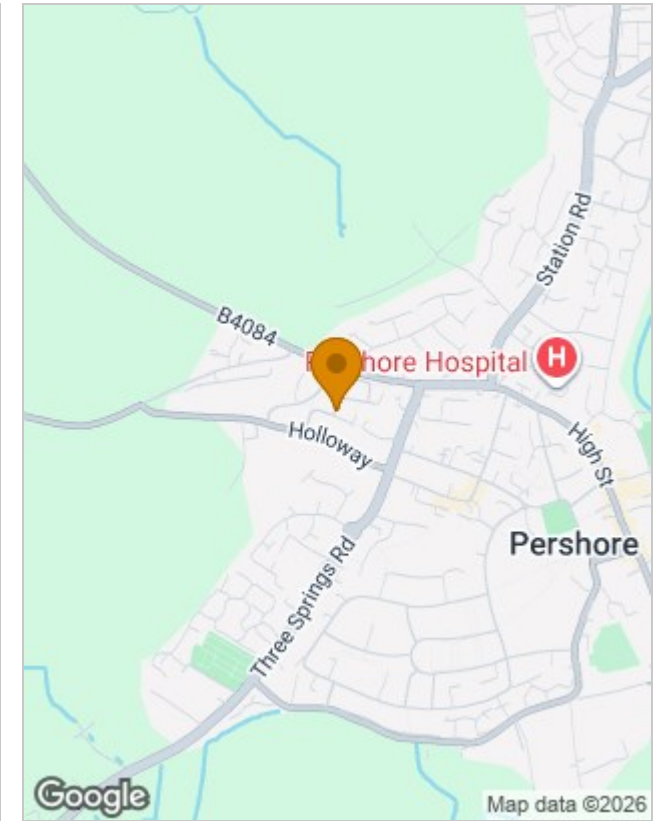




Floor Plans



Location Map



Viewing

Please contact our Evesham Office on 01386 442929 if you wish to arrange a viewing appointment for this property or require further information.

Energy Performance Graph

